

Build and strengthen relationships with our business partners in the West Develop a better understanding of what the challenges and opportunities are out West Connect with elected officials to identify and strategize potential East-West partnerships

RETURN to the WEST

ITINERARY

Tuesday, July 13

- 7:00 – 7:30 a.m. Depart Grand Forks
(Car pooling is encouraged)
- 2:00 p.m. Arrive in Arnegard & Meet at Fire Hall
- 2:00 p.m.- 4:00 p.m. North Dakota Petroleum Council
Bakken Basics Information Session - Fire Hall
- 4:15 p.m. - 5:00 p.m. Optional Visit to Oil Well Pad
(Bus available)
- 5:00 p.m. - 7:00 p.m. North Dakota Petroleum Council Cookfest
in Arnegard and Hotel Check-in
Watford City *(See 2nd page for Hotel Info)*
- 7:00 p.m. - 9:00 p.m. Cash Bar Reception
Stonehome Brewing Company
313 Fox Hills Pkwy N, Watford City, ND

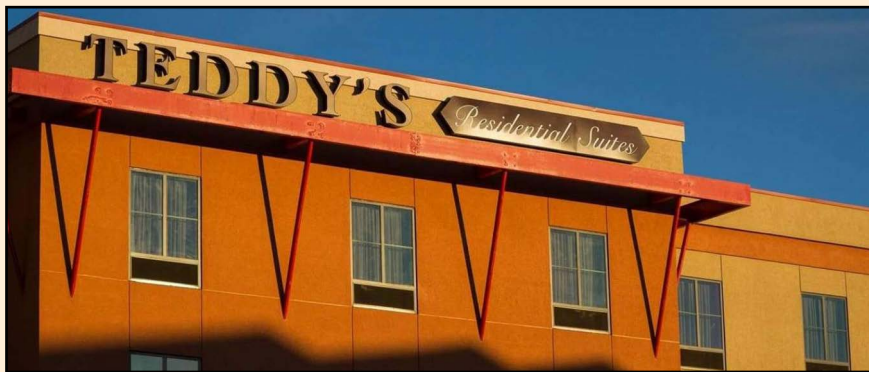
Wednesday, July 14th

- 7:45 a.m. Breakfast
Rough Rider Center
2209 Wolves Den Parkway, Watford City, ND
- 8:00 a.m. Introductions of East Businesses
doing business in the West
- 8:15 a.m. - 9:45 a.m. Public Sector Developments, Recent
Developments and Plans for the Coming 1-5 years
- 9:45 a.m. - 10:15 a.m. Break and Tour of Rough Rider Center
- 10:15 a.m. - 10:45 a.m. BVLOS presentation - Vantis
- 10:45 a.m. - 11:15 a.m. Private Sector Development Trends
- 11:15 a.m. - 11:45 a.m. Western Reaction to 2021 Legislative Session
- 12:00 p.m. Lunch
- 1:00 p.m. Depart for Grand Forks
- 7:00 p.m. Arrive back in Grand Forks



For more information, contact:

- Barry Wilfahrt, GF/EGF Chamber • Barry@gochamber.org
- Mike Dunn, Construction Engineers • MikeD@ConstructionEngineers.com



Teddy's Residential Suites

113 9th Ave SE, Watford City, ND 58854

Call to Reserve: (701) 842-6480

(Block of Rooms Reserved) = Grand Forks Chamber

- Double Queen Rooms \$99

Other amenities that make Teddy's the #1 hotel in Watford consist of:

- Teddy's Lounge- New menu items, extended hours- NOW open for lunch on weekends
- Pools and Hot Tubs available and accessible at property
- Fitness centers are open 24 hours
- Complimentary Laundry

RETURN
to the **WEST**

WEDNESDAY, JULY 14TH, 2021

CLICK HERE TO REGISTER

\$50 Registration
includes
Breakfast & Lunch
at the
Rough Rider Center

2209 Wolves Den Parkway, Watford City, ND



*Build and strengthen relationships with our business partners in the West Develop a better understanding of what the challenges and opportunities are out West
Connect with elected officials to identify and strategize potential East-West partnerships*