

20 YEAR



ONE
ENERGY

AGREEMENT BETWEEN MARATHON AND ONE ENERGY DEMONSTRATES **COMMITMENT TO STARK COUNTY**



Marathon and One Energy are working together to install 5 on-site wind turbines to power Marathon's renewable fuels facility.

This rendering shows four of five turbines. The fifth will be slightly off the left edge of the photo. All turbines will be on current Marathon property.

MARATHON DICKINSON RENEWABLE FUELS FACILITY

2nd

largest in the U.S.

100

employees

~20

contractors

**4.5
million**

acres of soy/corn used annually
to produce diesel fuel

**\$500
million**

investment in Stark County

**~\$19
million**

local wages and benefits
paid annually

**\$2.1
million**

property taxes paid in
Stark County

THE WIND PROJECT

5 wind turbines will be located on current facility property

Turbines will provide up to 45% of the Marathon plant's electricity

\$24 million additional investment in Stark County

\$940,000 in taxes projected over the life of the project

\$500,000 to be awarded in scholarships to local students over the life of the project

THE IMPORTANCE OF WIND TO THE MARATHON DICKINSON RENEWABLE FUELS FACILITY

Increases the value of the renewable fuels produced here by lowering the fuels' carbon intensity

Positions the facility for long-term success in a very competitive industry



**THE IMPORTANCE OF WIND
TO STARK COUNTY**

- 20-year agreement demonstrating Marathon's long-term commitment to the facility and the community
- Positions the Dickinson facility as a continued major employer and taxpayer

**safe and
small-scale**

These wind turbines are designed not to cause dust, fumes, odors, smoke, vapor, or vibrations. The five wind turbines will operate without gear boxes, which reduces noise and makes for a safer, more reliable operation.

The wind turbines will be located on property currently owned by Marathon.

PROXIMITY TO NEIGHBORS



6 Homes
within 1 mile of turbines

87 Homes
within 2 miles of turbines

There are currently six residences within one mile of the wind project. At one mile away, it would be extremely unlikely for any noise produced by the turbines to be detected by humans.

**10 facts about
this project**

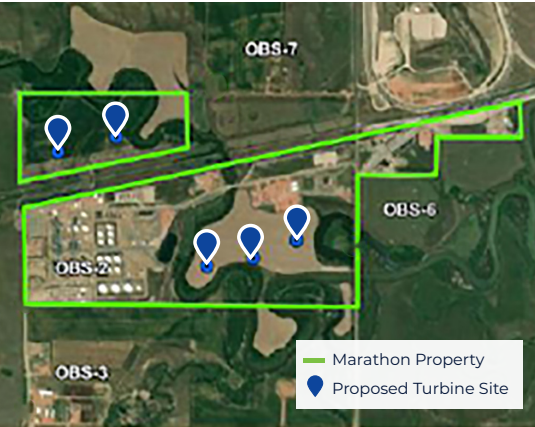
1. This project is located entirely on property Marathon already owns.
2. This project is not designed to sell into the interstate grid like commercial wind projects.
3. This project is not owned by a big electric utility. It is owned by One Energy and it exists to support the operation of the Dickinson facility.
4. This project is not located in rural farming fields, unlike many commercial wind projects.
5. This project consists of 5 wind turbines.
6. This project receives no subsidies from Stark County or the state of North Dakota.
7. This project is not expected to create significant construction traffic. It is only 5 turbines.
8. This project is located at a secured industrial site and is being constructed to the highest safety standards in the industry.
9. Ordinary operation of the turbines is not noisy. The wind turbine sound should be quieter than a library at the closest residence.
10. These wind turbines are designed to not emit fumes, glare, smoke, dust, odor, or vibrations.



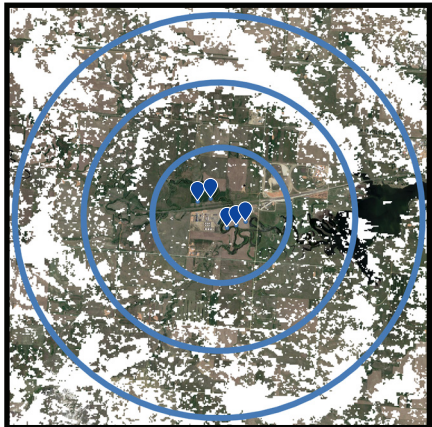
1 mile
from closest turbine



2 miles
from closest turbine



Satellite image of the Marathon facility in Dickinson. The blue pins represent wind turbine location.



This is a three-mile "view shed" analysis. The areas shown in white will be unable to see the hub of the turbine or its lights due to topography.

PROUD TO BE A PART OF THE STARK COUNTY COMMUNITY



ABOUT **MPC**

In business for more than 130 years, MPC operates the nation's largest refining system. MPC operations include refining, midstream and retail marketing.

ABOUT **ONE ENERGY**

One Energy is an industrial power company providing energy solutions, including Wind for Industry®, to empower large industrial customers.

For more information about the facility or the Wind for Industry® project, visit:
www.marathondickinsonrenewables.com

To contact the Marathon plant team with any questions, email:
dickinsoncommunity@marathonpetroleum.com

To contact the Wind for Industry® team with any questions, email:
dickinsonwind@oneenergylc.com



marathonpetroleum.com



oneenergy.com